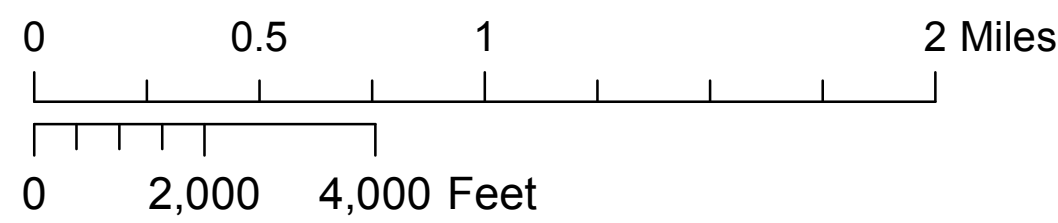
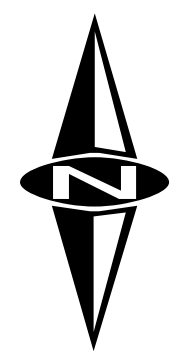


Town of Clayton

Zoning Map



I CERTIFY THAT THIS IS THE OFFICIALLY ADOPTED
ZONING MAP OF THE TOWN OF CLAYTON

TOWN CLERK

DATE

Effective date:
May 10, 2017

The MR District boundary
is located 400' from the
high water mark surrounding
Grindstone Island.

The SPO is set back 800'
from the rights-of-way of
New York State
Routes 12 and 12E.

The WRA is set back 1,000'
from the rights-of-way of
NYS Routes 12 and 12E.

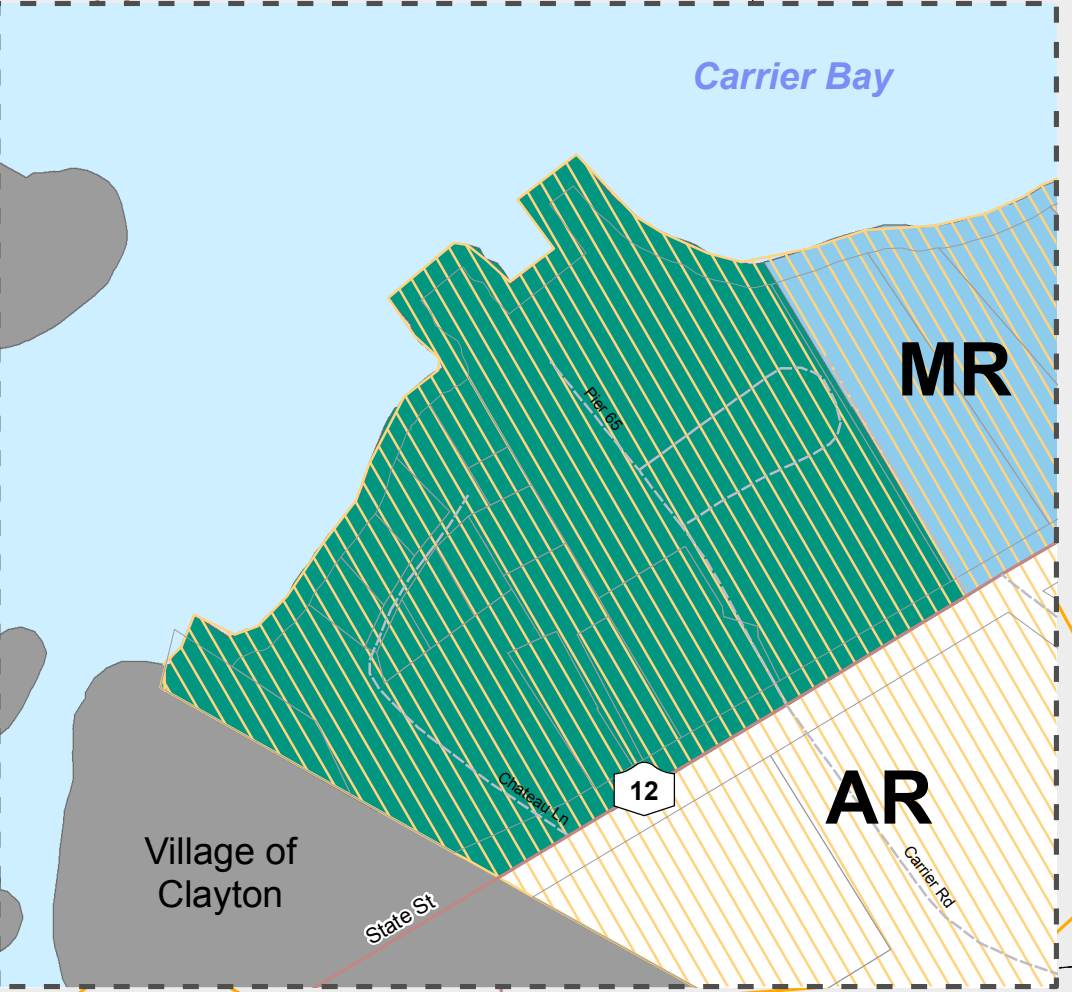
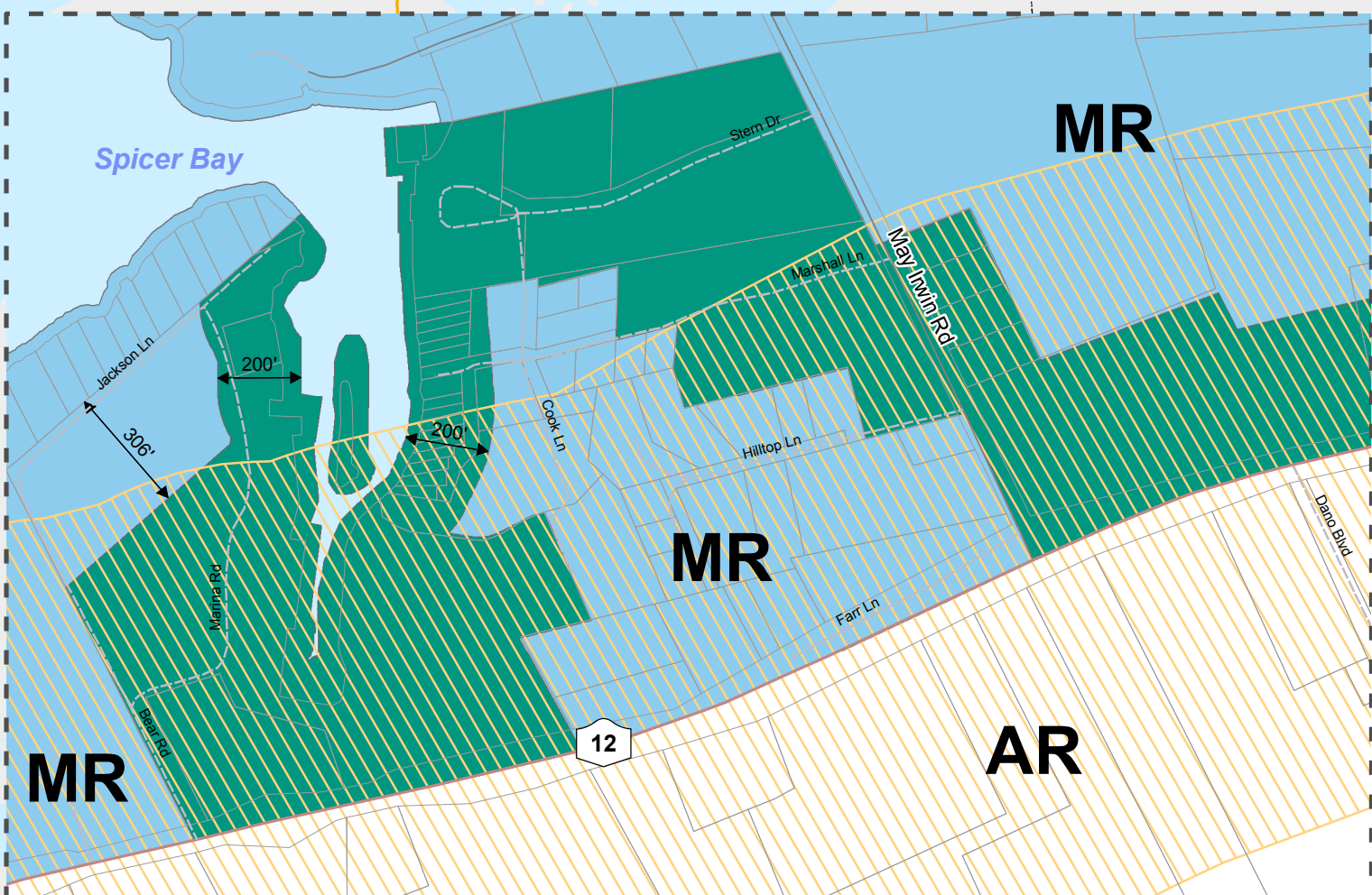
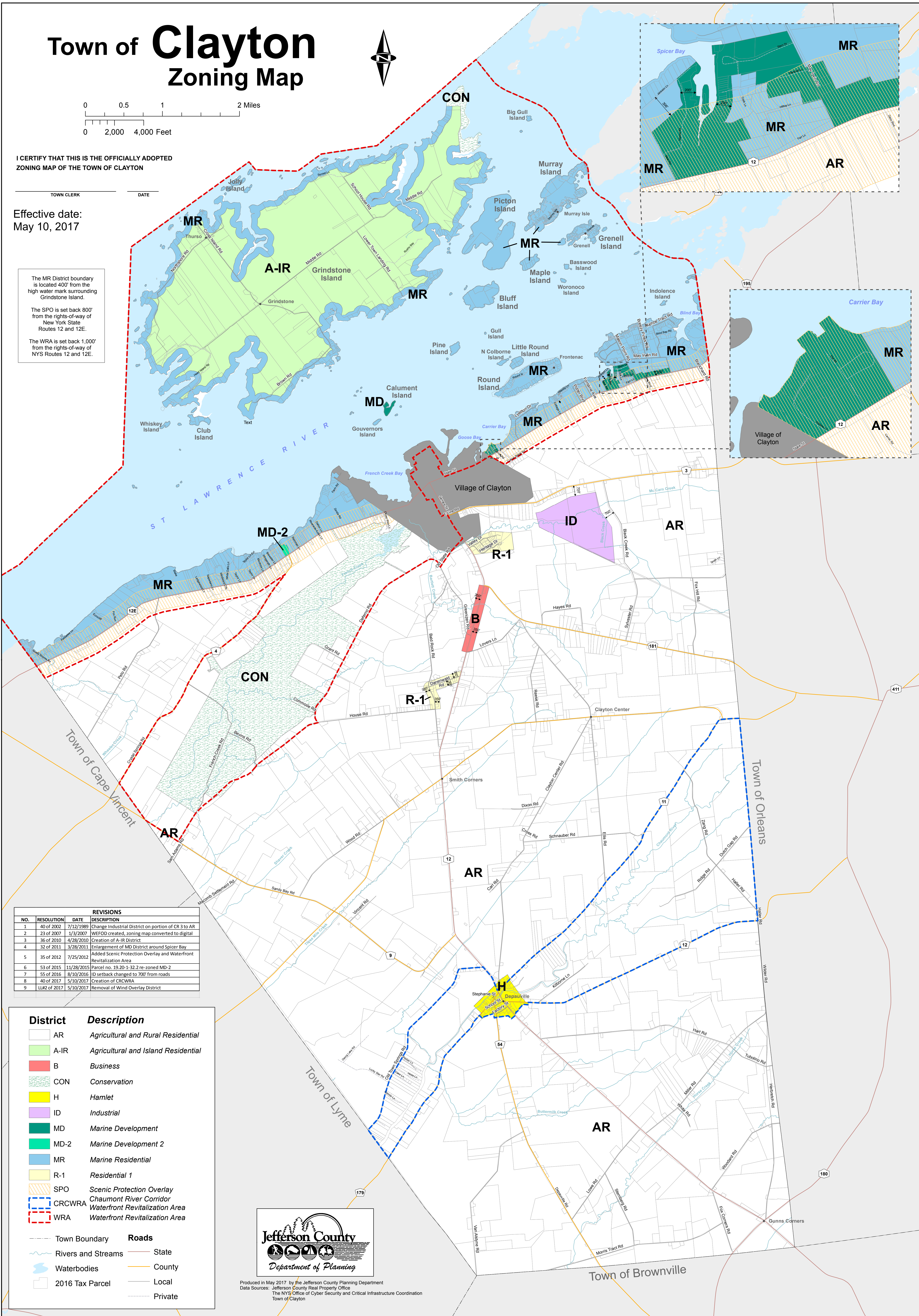
REVISIONS			
NO.	RESOLUTION	DATE	DESCRIPTION
1	40 of 2002	7/12/1989	Change Industrial District on portion of CR 3 to AR
2	23 of 2007	1/3/2007	WEFOD created, zoning map converted to digital
3	36 of 2010	4/28/2010	Creation of A-IR District
4	32 of 2011	3/28/2011	Enlargement of MD District around Spicer Bay
5	35 of 2012	7/25/2012	Added Scenic Protection Overlay and Waterfront Revitalization Area
6	53 of 2015	11/28/2015	Parcel no. 19.20-1-32.2 re-zoned MD-2
7	55 of 2016	8/10/2016	ID setback changed to 700' from roads
8	40 of 2017	5/10/2017	Creation of CRCWRA
9	LLR2 of 2017	5/10/2017	Removal of Wind Overlay District

District	Description
AR	Agricultural and Rural Residential
A-IR	Agricultural and Island Residential
B	Business
CON	Conservation
H	Hamlet
ID	Industrial
MD	Marine Development
MD-2	Marine Development 2
MR	Marine Residential
R-1	Residential 1
SPO	Scenic Protection Overlay
CRCWRA	Chaumont River Corridor Waterfront Revitalization Area
WRA	Waterfront Revitalization Area

	Roads
-----	Town Boundary
~~~~~	Rivers and Streams
~~~~~	Waterbodies
□	2016 Tax Parcel
---	State
---	County
---	Local
---	Private



Produced in May 2017 by the Jefferson County Planning Department
Data Sources: Jefferson County Real Property Office
The NYS Office of Cyber Security and Critical Infrastructure Coordination
Town of Clayton



Town of Clayton

Zoning Reference Map

May 2017

THIS MAP IS FOR REFERENCE USE ONLY. THE OFFICIAL ZONING MAP IS ON FILE AT THE TOWN CLERKS OFFICE.

The MR District boundary is located 400' from the high water mark surrounding Grindstone Island.

The SPO is set back 800' from the rights-of-way of New York State Routes 12 and 12E.

The WRA is set back 1,000' from the rights-of-way of NYS Routes 12 and 12E.

