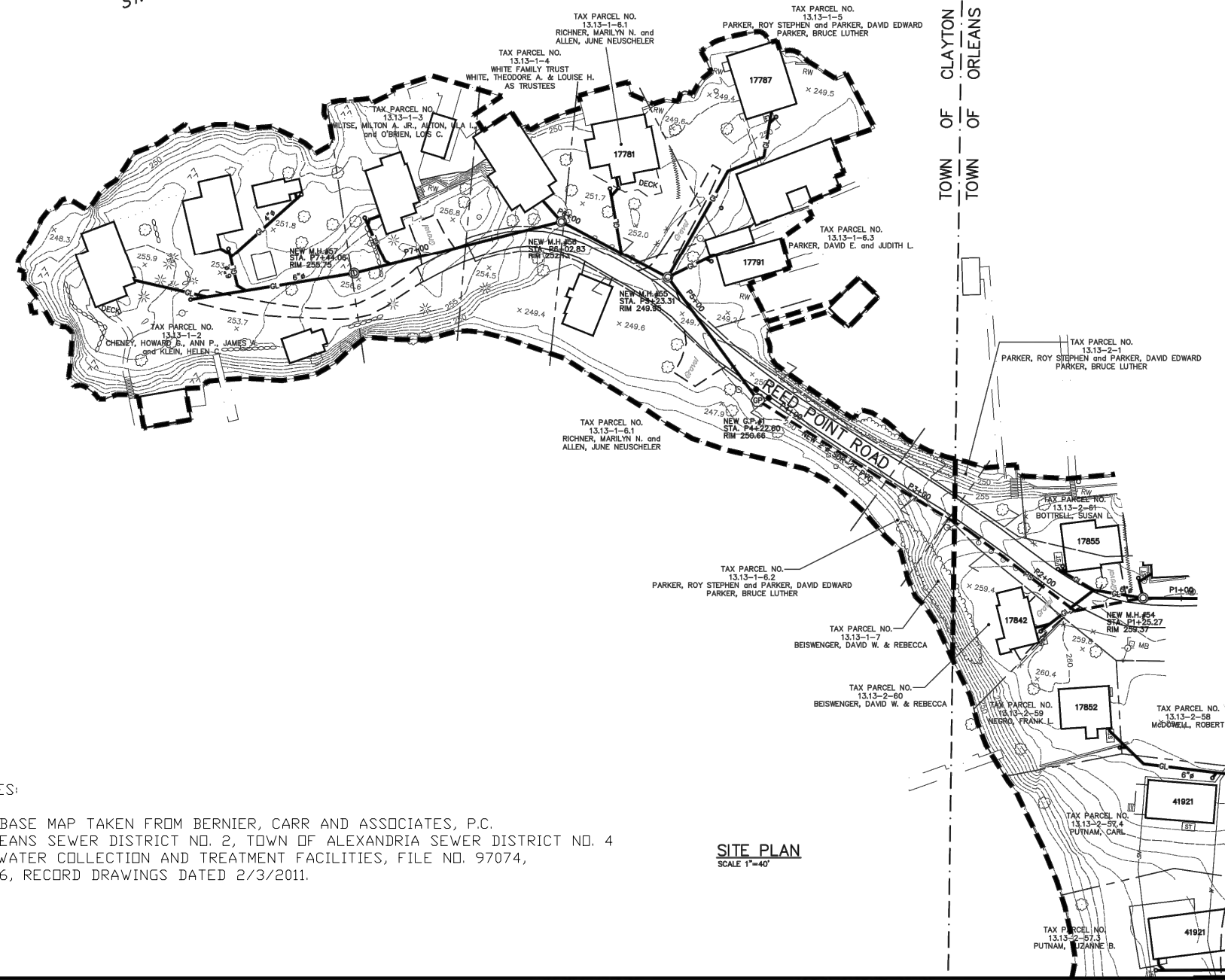




ST. LAWRENCE RIVER



GENERAL NOTES:

- 1. DISTRICT BASE MAP TAKEN FROM BERNIER, CARR AND ASSOCIATES, P.C. TOWN OF ORLEANS SEWER DISTRICT NO. 2, TOWN OF ALEXANDRIA SEWER DISTRICT NO. 4 JOINT WASTEWATER COLLECTION AND TREATMENT FACILITIES, FILE NO. 97074, SHEET NO. S-6, RECORD DRAWINGS DATED 2/3/2011.

SITE PLAN
SCALE 1"=40'

MATCH LINE SEE SHEET S-8

ST LAWRENCE ENGINEERING DPC
MUNICIPAL AND COMMERCIAL ENGINEERING AND DESIGN
17493 BLIND BAY ROAD, CLAYTON NY 13624
WWW.STLAWRENCEENGINEERING.COM
315/783-6384 315/408-7443

FOURTH COAST INC
MUNICIPAL CONSULTING - PROJECT DEVELOPMENT AND MANAGEMENT - CONSTRUCTION MANAGEMENT
17493 BLIND BAY ROAD, CLAYTON NEW YORK 13624
315/783-6384 WWW.FOURTHCOAST.COM 315/408-7443
ENVIRONMENTAL CONSULTING - RENEWABLE ENERGY SYSTEMS AND INSTALLATION - A NYS CERTIFIED WOMEN OWNED BUSINESS ENTERPRISE

TOWN OF CLAYTON
MUNICIPAL MINI-GRANT ASSET
MANAGEMENT DEVELOPMENT PLAN

PROJECT: TOWN OF CLAYTON
MUNICIPAL MINI-GRANT ASSET
MANAGEMENT DEVELOPMENT PLAN

DATE: 9/27/2013
REVISION: 1

DESIGNER: RLS
CHECKED: RLS
SCALE: AS SHOWN

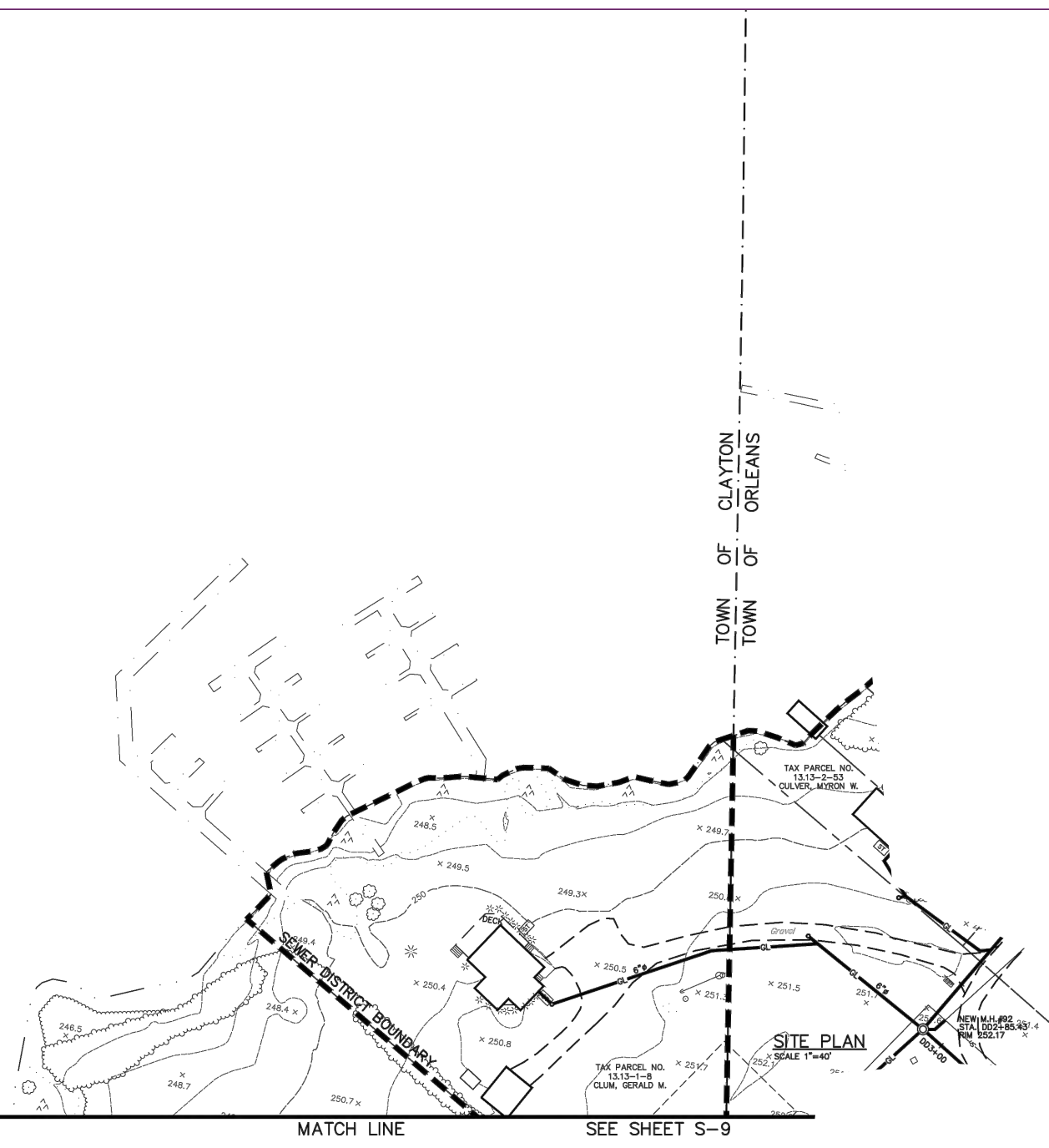
DRAWING TITLE:
EXHIBIT

9



GENERAL NOTES:

- 1. DISTRICT BASE MAP TAKEN FROM BERNIER, CARR AND ASSOCIATES, P.C. TOWN OF ORLEANS SEWER DISTRICT NO. 2, TOWN OF ALEXANDRIA SEWER DISTRICT NO. 4 JOINT WASTEWATER COLLECTION AND TREATMENT FACILITIES, FILE NO. 97074, SHEET NO. S-8, RECORD DRAWINGS DATED 2/3/2011.



ST LAWRENCE ENGINEERING DPC
 MUNICIPAL AND COMMERCIAL ENGINEERING AND DESIGN
 17493 BLIND BAY ROAD, CLAYTON NY 13624
 WWW.STLAWRENCEENGINEERING.COM
 315/783-6384 315/408-7443

FOURTH COAST INC
 MUNICIPAL CONSULTING - PROJECT DEVELOPMENT AND MANAGEMENT - CONSTRUCTION MANAGEMENT
 17493 BLIND BAY ROAD, CLAYTON NEW YORK 13624
 315/783-6384 WWW.FOURTHCOAST.COM 315/408-7443
 ENVIRONMENTAL CONSULTING - RENEWABLE ENERGY SYSTEMS AND INSTALLATION - A NYS CERTIFIED WOMEN OWNED BUSINESS ENTERPRISE

TOWN OF CLAYTON
 MUNICIPAL MINI-GRANT ASSET
 MANAGEMENT DEVELOPMENT PLAN

DATE: 9/27/2013
 REVISIONS: 1
 DRAWN: BLD
 CHECKED: RLS
 SCALE: AS SHOWN